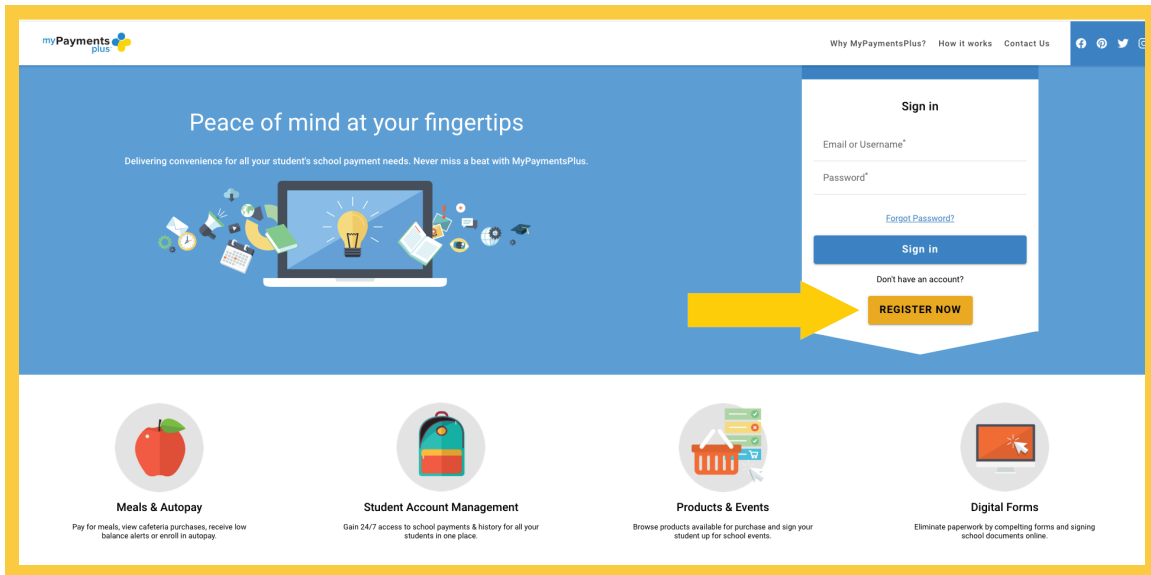
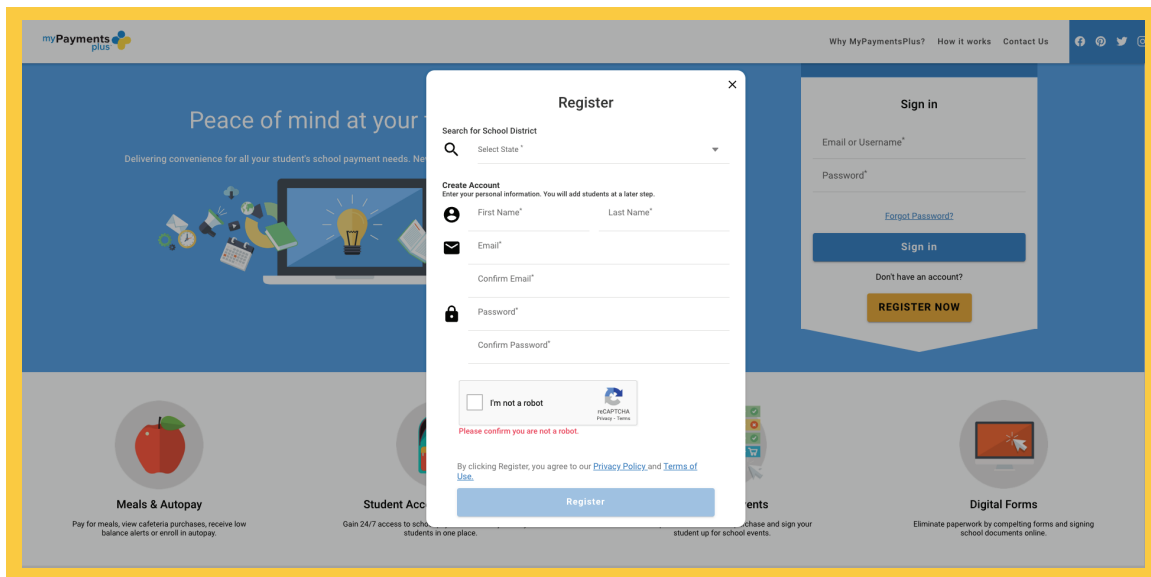


Getting Started With MyPaymentsPlus

Step 1: Visit www.mypaymentsplus.com and click [Register Now](#).



Step 2: Select your [state and school district](#) from the drop-down menu. Enter PARENT NAME AND EMAIL information and click [Register](#).

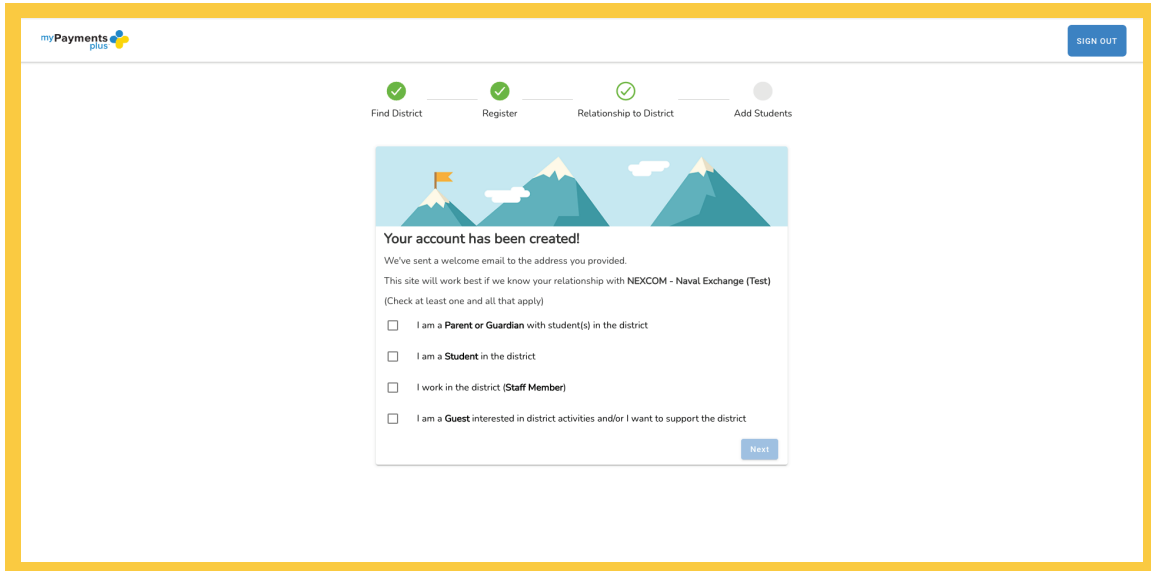


USE OUR LIVE
CHAT OPTION!

Need Support? Reach out to Us! Parent Phone Support: 877.237.0946 | Parent Email Support: Support@MyPaymentsPlus.com

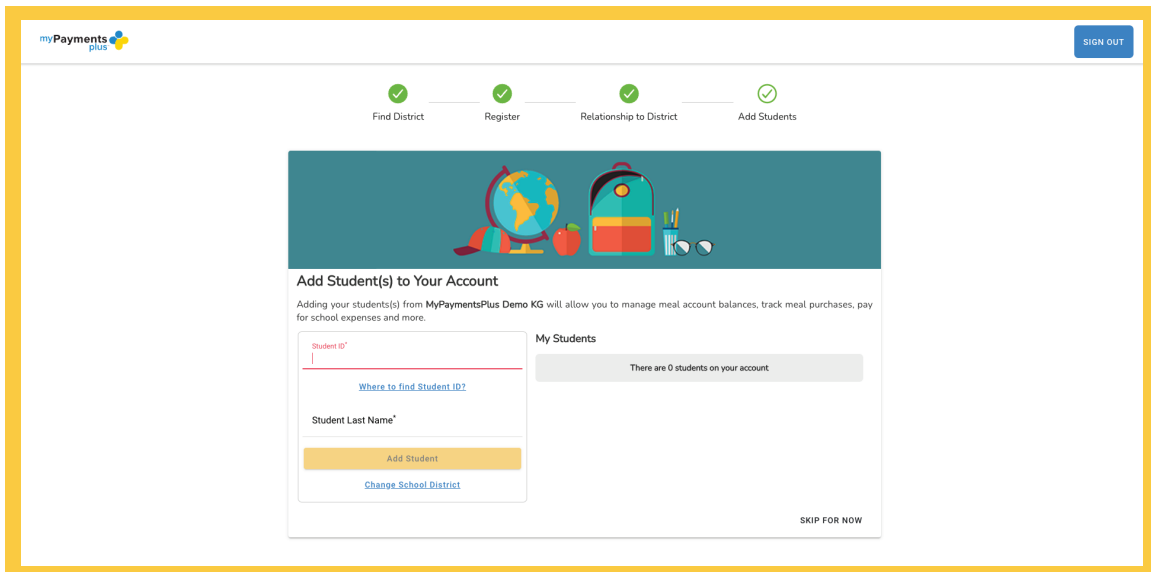
Getting Started With MyPaymentsPlus

Step 3: Select the appropriate option and click [Next](#).



The screenshot shows the MyPaymentsPlus registration interface. At the top, a progress bar indicates four steps: Find District (checked), Register (checked), Relationship to District (checked), and Add Students (unchecked). A 'SIGN OUT' button is in the top right. The main content area features a mountain illustration and the heading 'Your account has been created!'. Below this, it states: 'We've sent a welcome email to the address you provided. This site will work best if we know your relationship with NEXCOM - Naval Exchange (Test) (Check at least one and all that apply)'. There are four radio button options: 'I am a Parent or Guardian with student(s) in the district', 'I am a Student in the district', 'I work in the district (Staff Member)', and 'I am a Guest interested in district activities and/or I want to support the district'. A 'Next' button is at the bottom right of the form.

Step 4: Using their ID number and last name, add student(s) to your account (ADD ALL STUDENTS CURRENTLY REGISTERED) and click [Done](#).



The screenshot shows the 'Add Student(s) to Your Account' page. The progress bar at the top now shows all four steps (Find District, Register, Relationship to District, Add Students) as completed. A 'SIGN OUT' button is in the top right. The main content area features a school-themed illustration (globe, backpack, apple) and the heading 'Add Student(s) to Your Account'. Below this, it says: 'Adding your student(s) from MyPaymentsPlus Demo KG will allow you to manage meal account balances, track meal purchases, pay for school expenses and more.' There is a form with two fields: 'Student ID*' and 'Student Last Name*'. A link 'Where to find Student ID?' is below the first field. An 'Add Student' button is below the second field. A link 'Change School District' is at the bottom of the form. To the right of the form, under the heading 'My Students', it says 'There are 0 students on your account'. A 'SKIP FOR NOW' link is at the bottom right of the page.

*The following page does not apply when registering for guest accounts.

USE OUR LIVE
CHAT OPTION!

Need Support? Reach out to Us! Parent Phone Support: 877.237.0946 | Parent Email Support: Support@MyPaymentsPlus.com